



WE MAKE IT EASY™

## Fire Damper Quote Form

Please complete and return this form with your blueprint to your local branch or email it with a PDF of the blueprint to [commercial@munchsupply.com](mailto:commercial@munchsupply.com).

Date: \_\_\_\_\_ Company name: \_\_\_\_\_ Company contact: \_\_\_\_\_

Address: \_\_\_\_\_ City: \_\_\_\_\_ State: \_\_\_\_\_ Zip: \_\_\_\_\_

Email: \_\_\_\_\_ Phone (main): \_\_\_\_\_ Phone (cell): \_\_\_\_\_

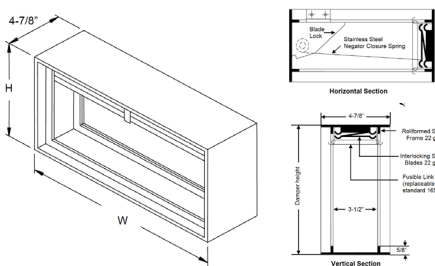
Project name: \_\_\_\_\_ Project location: \_\_\_\_\_

### System type (Select one.)

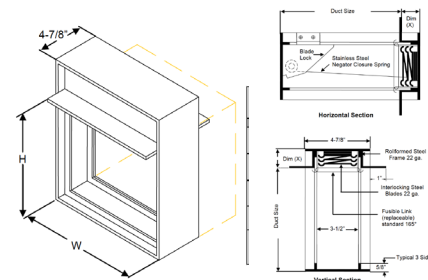
- Std: STATIC (used in duct systems or penetrations where there is no or negligible airflow when the damper closes)
- Opt: DYNAMIC (required at locations where fan pressure will be on during a fire incident and are expected to be able to close against the air velocity and pressure produced by the system fan)

### Damper type (Select one.)

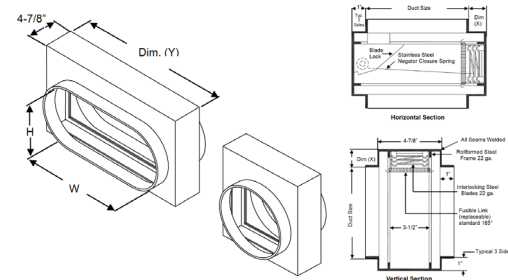
- Type A: SQUARE, IN AIR STREAM  
Fits inside the duct with reduced airflow capacity; the spring is inside the duct.



- Type B: SQUARE, OUT OF AIR STREAM  
Full size duct opening with full capacity airflow; the spring is outside the duct.



- Type C: ROUND, OUT OF AIR STREAM  
Square to round configuration; the spring is outside the duct.



Duct size (wxh) \_\_\_\_\_ x \_\_\_\_\_ or (diameter) \_\_\_\_\_ Qty \_\_\_\_\_

Duct size (wxh) \_\_\_\_\_ x \_\_\_\_\_ or (diameter) \_\_\_\_\_ Qty \_\_\_\_\_

Duct size (wxh) \_\_\_\_\_ x \_\_\_\_\_ or (diameter) \_\_\_\_\_ Qty \_\_\_\_\_

Duct size (wxh) \_\_\_\_\_ x \_\_\_\_\_ or (diameter) \_\_\_\_\_ Qty \_\_\_\_\_

### Air flow/mounting (Select one.)

- Std: HORIZONTAL AIRFLOW, VERTICAL MOUNT (i.e. in a wall)
- Opt: VERTICAL AIRFLOW, HORIZONTAL MOUNT\* (i.e. in a ceiling)

\*Horizontal mounts are spring-loaded (dynamic) by design—no need to order as dynamic.

**Fusible link** (Select one.)  Std: 165°F  Opt: 212°F

**Hour rated** (Select one.)  Std: 1½ hour  Opt: 3 hour (not available on all styles)

**Sleeve required?**  Yes  No If yes, please specify: Gauge \_\_\_\_\_ Depth \_\_\_\_\_

If you need a sleeve and the damper is a Type B, specify if high hat is IN or OUT of sleeve:  In  Out

Other notes: \_\_\_\_\_

### For internal use only

Date: \_\_\_\_\_ Employee name: \_\_\_\_\_

Company account #: \_\_\_\_\_ Comments: \_\_\_\_\_